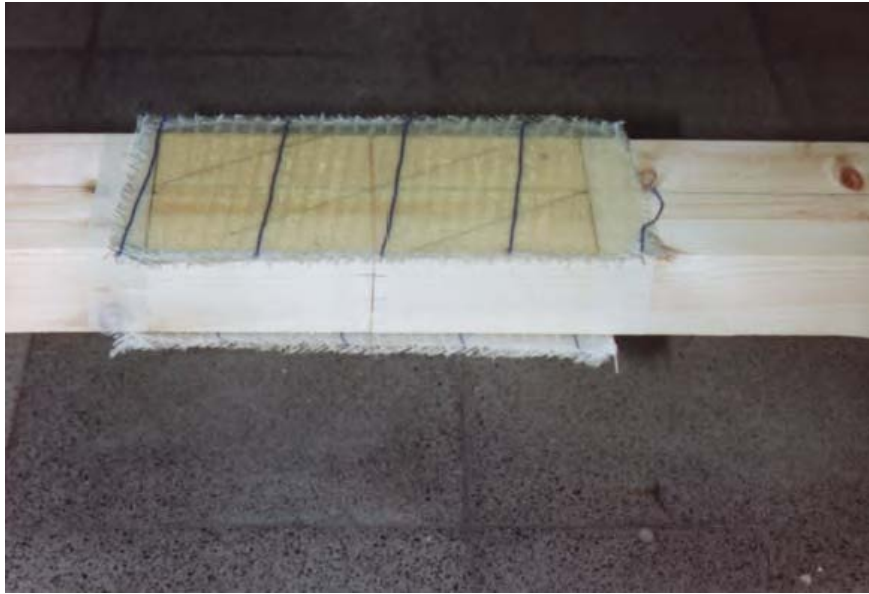


For citation information please see <http://www.claisse.info/Publish.htm>

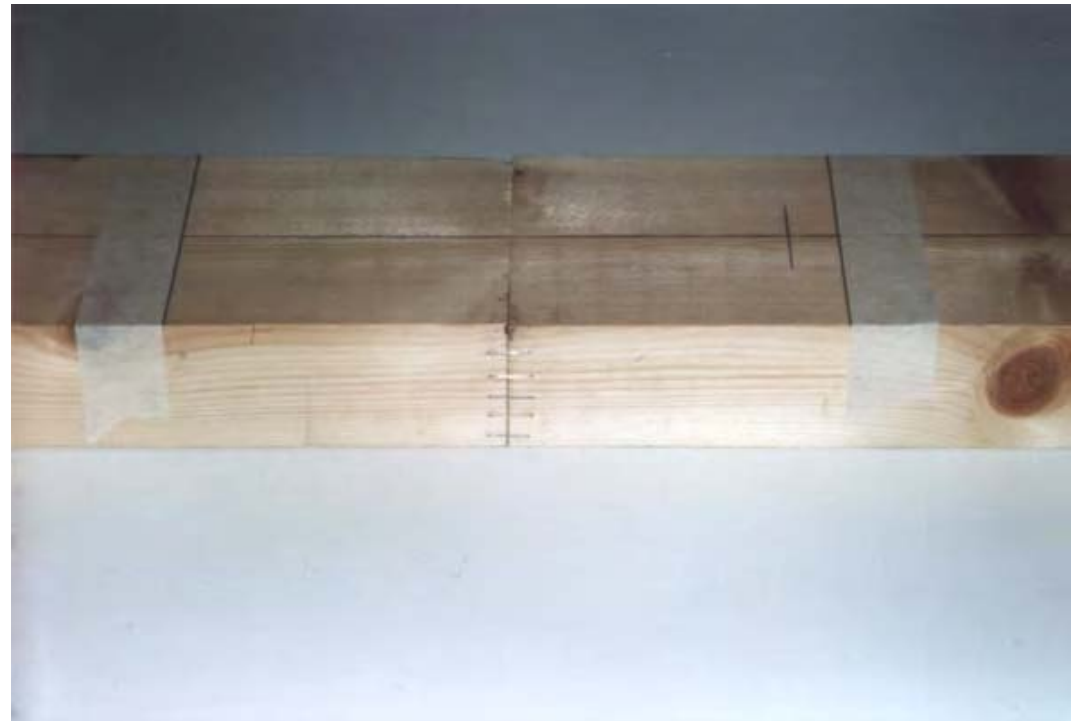
Wood-Glass-Epoxy Composites Research at Coventry

Peter Claisse

Assembling a timber joint with glass-epoxy



Examples of joints



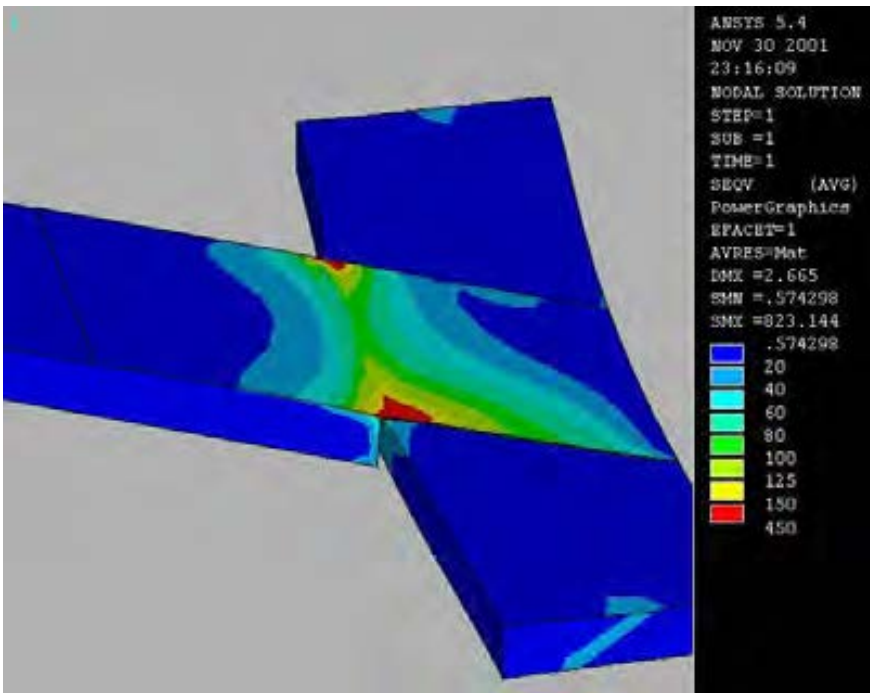
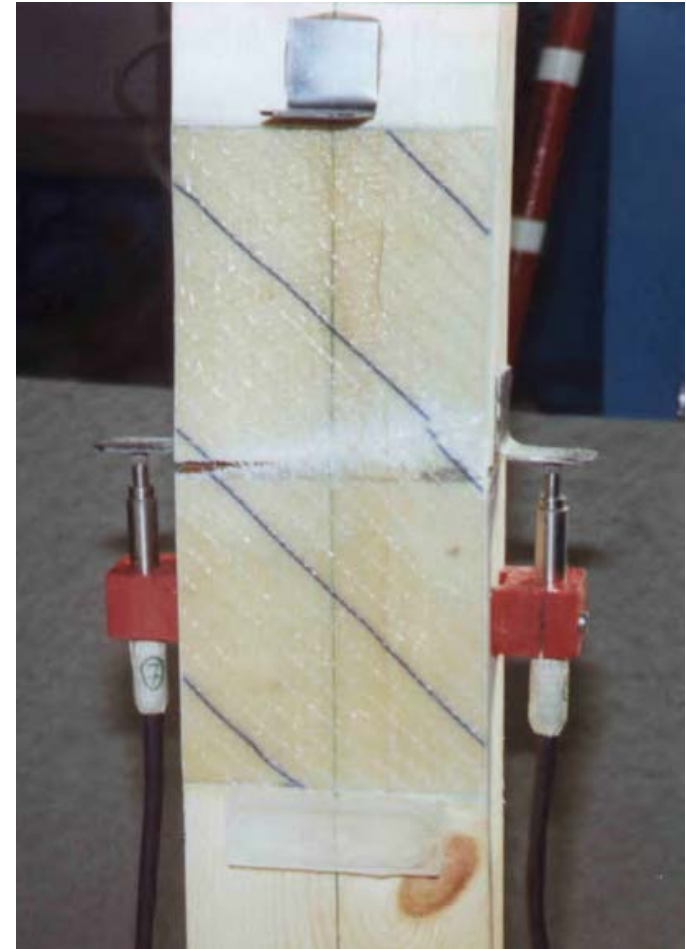
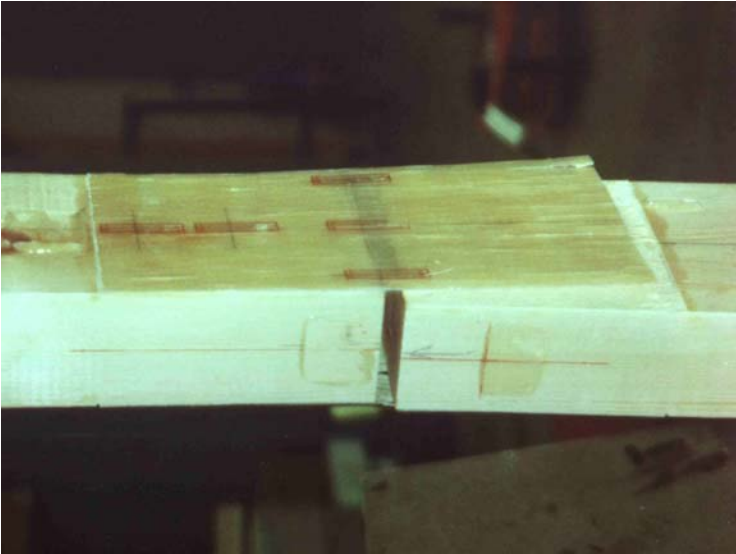
Setting strain gauges in the resin



Testing



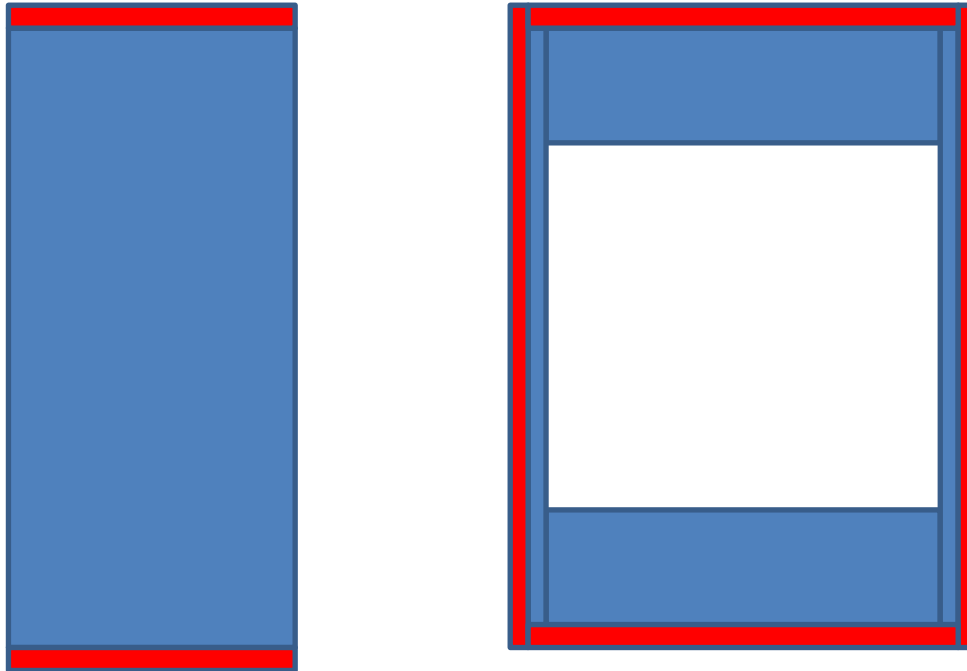
Modes of failure



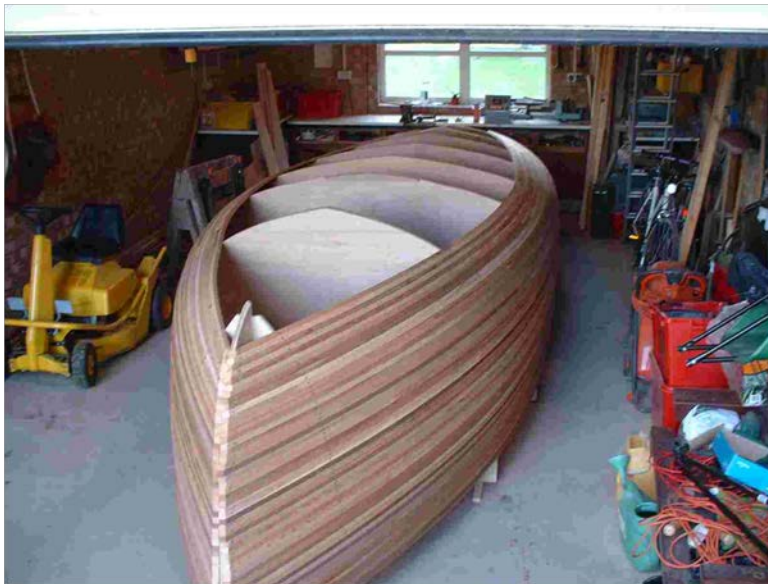
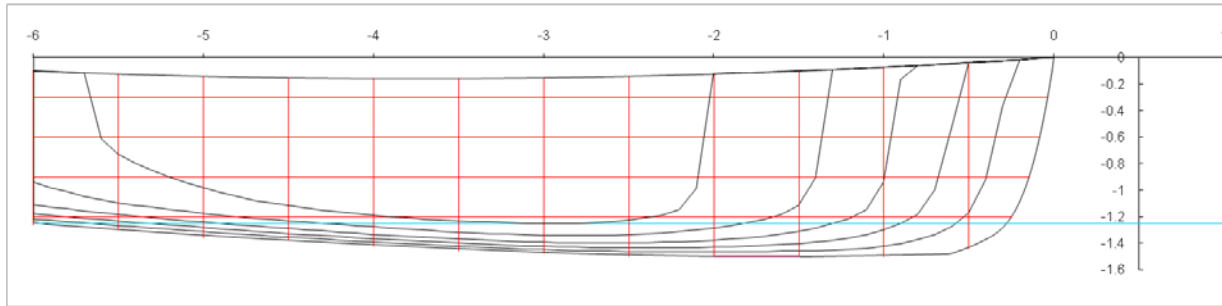
Testing a complete truss



Reinforcing timber and composite beams



Strip-plank boat construction using glass and aramid fibres.

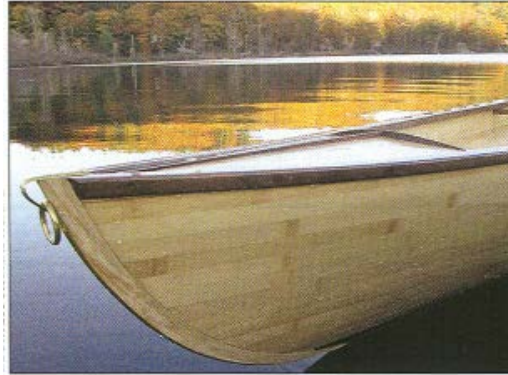


Advantages and disadvantages

- The advantages of wood-glass epoxy composites are:
 - Improved joint efficiency can give reduced member sizes
 - Surface is impermeable to water and durable
- The disadvantages are
 - Cost (can be reduced by using polyesters)
 - Difficulties with application including health risks.

Applications of glass-epoxy to bamboo??

Strip planking ??



Joining circular sections?

Thank you for your attention
For more details
(and a full copy of the PhD thesis)
Please see www.claisse.info